

1053 Bronze Y-Type Strainer (Screwed) I.B.R

Salient Features

- Screwed Female Ends to BSPT.
- Stainless Steel (S.S 304) Ø1 mm perforated sheet screen is guided in the body and cover.
- Fine finish and smooth contours reduce pressure drop in the strainer.
- Large screening area makes the strainer efficient in performance.

Test Pressure (Hydrostatic) :

Shell : 35.15 kg/cm²g (500 psig)

Working Pressure (Steam) : 17.58 kg/cm²g (250 psig)

Maximum Working Temperature : 225°C

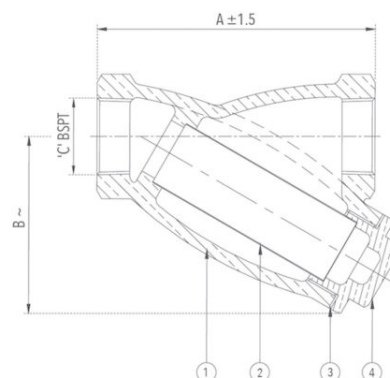


Suitable For

Steam, Water

Materials

| P.No. | Name of Part | Material of Construction | Specification | Quantity |
|-------|----------------------------|--------------------------|------------------------|----------|
| 1 | Body | Bronze | IBR 282 (a) (iv) Gr. B | 1 |
| 2 | Screen (Ø1 mm Perforation) | Stainless Steel | Type 304 | 1 |
| 3 | Gasket | Steam Jointing Sheet | IS 2712 Gr. W/3 | 1 |
| 4 | Cover | Bronze | IBR 282 (a) (iv) Gr. B | 1 |



Sizes / Dimensions

| Size (Inches) | Size (mm) | A ±1.5 | B ~ | C |
|---------------|-----------|--------|-----|--------|
| 1/2 | 15 | 76 | 56 | 1/2" |
| 3/4 | 20 | 98 | 67 | 3/4" |
| 1 | 25 | 133 | 97 | 1" |
| 1 1/4 | 32 | 152 | 108 | 1 1/4" |
| 1 1/2 | 40 | 178 | 116 | 1 1/2" |
| 2 | 50 | 222 | 140 | 2" |

~ ±10

1053A Forged Brass Y-Type Strainer (Screwed) PN 25

Salient Features

- Screwed Female Ends to BSP.
- Stainless Steel (S.S 304) Ø1 mm perforated sheet screen is guided in the body and cover.
- Fine finish and smooth contours reduce pressure drop in the strainer.
- Large screening area makes the strainer efficient in performance.

Test Pressure (Hydrostatic) :

Shell : 35 kg/cm²g (500 psig)

Working Pressure : 25 kg/cm²g (350 psig)

Suitable For

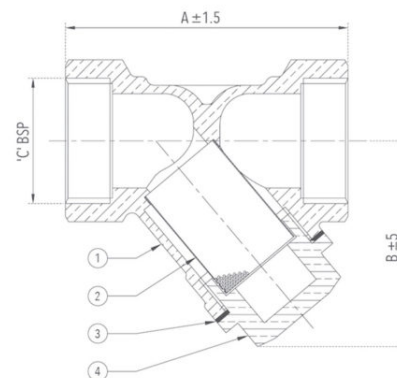
Steam*, Water, Oil, Air*, Gases*

*Suitable for pressure upto 6.9 kg/cm²g (100 psig)



Materials

| P.No. | Name of Part | Material of Construction | Specification | Quantity |
|-------|----------------------------|--------------------------|-----------------|----------|
| 1 | Body | Forged Brass | IS 6912 Gr. FLB | 1 |
| 2 | Screen (Ø1 mm Perforation) | Stainless Steel | Type 304 | 1 |
| 3 | Gasket | PTFE | BS EN 12086-1 | 1 |
| 4 | Cover | Forged Brass | IS 6912 Gr. FLB | 1 |



Sizes / Dimensions

| Size (Inches) | Size (mm) | A ±1.5 | B ±5 | C |
|---------------|-----------|--------|------|--------|
| 1/2 | 15 | 54 | 45 | 1/2" |
| 3/4 | 20 | 67.5 | 56 | 3/4" |
| 1 | 25 | 75 | 56 | 1" |
| 1 1/4 | 32 | 94 | 73 | 1 1/4" |
| 1 1/2 | 40 | 100 | 80 | 1 1/2" |
| 2 | 50 | 126 | 99 | 2" |

1054 Bronze Y-Type Strainer (Flanged) I.B.R.

Salient Features

- Flanged Ends to BS 10 Table 'H'.
- Stainless Steel (S.S 304) Ø1 mm perforated sheet screen is guided in the body and cover.
- Fine finish and smooth contours reduce pressure drop in the strainer.
- Large screening area makes the strainer efficient in performance.

Test Pressure (Hydrostatic) :

Shell : 35.15 kg/cm²g (500 psig)

Working Pressure (Steam) : 17.58 kg/cm²g (250 psig)

Maximum Working Temperature : 225°C

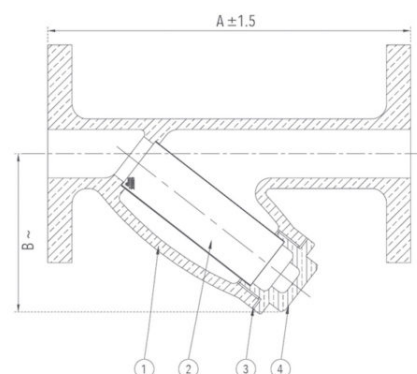
Suitable For

Steam, Water



Materials

| P.No. | Name of Part | Material of Construction | Specification | Quantity |
|-------|----------------------------|--------------------------|------------------------|----------|
| 1 | Body | Bronze | IBR 282 (a) (iv) Gr. B | 1 |
| 2 | Screen (Ø1 mm Perforation) | Stainless Steel | Type 304 | 1 |
| 3 | Gasket | Steam Jointing Sheet | IS 2712 Gr. W/3 | 1 |
| 4 | Cover | Bronze | IBR 282 (a) (iv) Gr. B | 1 |



Sizes / Dimensions

| Size (Inches) | Size (mm) | A ±1.5 | B ~ |
|---------------|-----------|--------|-----|
| 1/2 | 15 | 136 | 68 |
| 3/4 | 20 | 140 | 85 |
| 1 | 25 | 162 | 110 |
| 1 1/4 | 32 | 178 | 120 |
| 1 1/2 | 40 | 203 | 145 |
| 2 | 50 | 203 | 188 |

~ ±10

1069 Cast Iron Y-Type Strainer (Screwed) I.B.R

Salient Features

- Screwed Female Ends to BSPT.
- Stainless Steel (S.S 304) perforated sheet screen (Ø1 mm Perforation) is guided in body and bonnet.
- Fine finish and smooth contours to minimize pressure drop inside the strainer.
- Large screening area makes the strainer highly efficient in performance.

Test Pressure (Hydrostatic) :

Shell : 21.10 kg/cm²g (300 psig)

Working Pressure (Steam) : 10.55 kg/cm²g (150 psig)

Maximum Working Temperature : 220°C

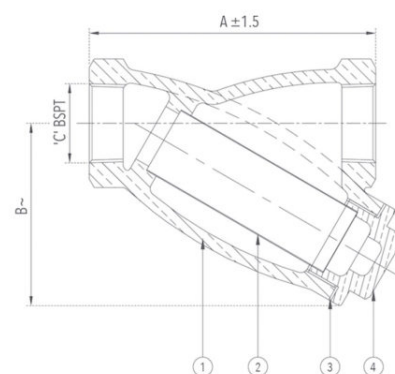
Suitable For

Steam, Water



Materials

| P.No. | Name of Part | Material of Construction | Specification | Qty. |
|-------|----------------------------|--------------------------|-----------------|------|
| 1 | Body | Cast Iron | IBR 86-93 Gr. A | 1 |
| 2 | Screen (Ø1 mm Perforation) | Stainless Steel | Type 304 | 1 |
| 3 | Gasket | Steam Jointing Sheet | IS 2712 Gr. W/3 | 1 |
| 4 | Cover | Cast Iron | IBR 86-93 Gr. A | 1 |



Sizes / Dimensions

| Size (Inches) | Size (mm) | A ±1.5 | B ~ | C |
|---------------|-----------|--------|-----|--------|
| 1/2 | 15 | 76 | 71 | 1/2" |
| 3/4 | 20 | 98 | 85 | 3/4" |
| 1 | 25 | 133 | 95 | 1" |
| 1 1/4 | 32 | 155 | 110 | 1 1/4" |
| 1 1/2 | 40 | 178 | 116 | 1 1/2" |
| 2 | 50 | 222 | 140 | 2" |

~ ±10

1070 Cast Iron Y-Type Strainer (Flanged) I.B.R.

Salient Features

- Flanged Ends to BS 10 Table 'F'.
- Stainless Steel (S.S 304) perforated sheet screen (Ø1 mm Perforation) is guided in body and cover.
- Drain Plug is provided to remove the accumulated foreign particles.
- Fine finish and smooth contours to minimize pressure drop inside the strainer.
- Large screening area makes the strainer extremely efficient in performance.

Test Pressure (Hydrostatic) :

Shell : 21.10 kg/cm²g (300 psig)

Working Pressure (Steam) : 10.55 kg/cm²g (150 psig)

Maximum Working Temperature : 220°C

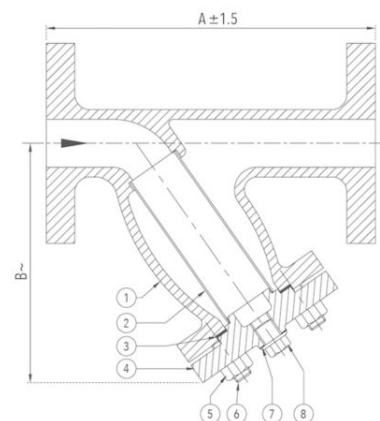
Suitable For

Steam, Water



Materials

| P.No. | Name of Part | Material of Construction | Specification | Qty. |
|-------|----------------------------|--------------------------|------------------------|----------|
| 1 | Body | Cast Iron | IBR 86-93 Gr. A | 1 |
| 2 | Screen (Ø1 mm Perforation) | Stainless Steel | Type 304 | 1 |
| 3 | Gasket | Steam Jointing Sheet | IS 2712 Gr. W/3 | 1 |
| 4 | Cover | Cast Iron | IBR 86-93 Gr. A | 1 |
| 5 | Nuts | Carbon Steel | IS 1367 | As Reqd. |
| 6 | Studs | Carbon Steel | IS 1367 | As Reqd. |
| 7 | Gasket | Steam Jointing Sheet | IS 2712 Gr. W/3 | 1 |
| 8 | Plug | Bronze | IBR 282 (a) (iv) Gr. B | 1 |



Sizes / Dimensions

| Size (Inches) | Size (mm) | A ±1.5 | B ~ |
|---------------|-----------|--------|-----|
| 1/2 | 15 | 136 | 87 |
| 3/4 | 20 | 140 | 88 |
| 1 | 25 | 162 | 112 |
| 1 1/4 | 32 | 185 | 135 |
| 1 1/2 | 40 | 206 | 152 |
| 2 | 50 | 210 | 205 |
| 2 1/2 | 65 | 248 | 250 |
| 3 | 80 | 270 | 268 |
| 4 | 100 | 381 | 290 |

~ ±10

1073 Cast Steel Y-Type Strainer (Flanged) I.B.R.

Salient Features

- Flanged Ends to BS 10 Table 'J'.
- Stainless Steel (S.S 304) perforated sheet screen (Ø1 mm Perforation) is guided in body and cover.
- Drain Plug to remove the accumulated foreign particles.
- Fine finish and smooth contours to minimize pressure drop inside the strainer.
- Large screening area makes the strainer more efficient.
- Suitable for thermic fluid application also.

Test Pressure (Hydrostatic) : 49 kg/cm²g (700 psig)
Maximum Working Pressure (Steam) : 24.60 kg/cm²g (350 psig)
Maximum Working Temperature : 425°C

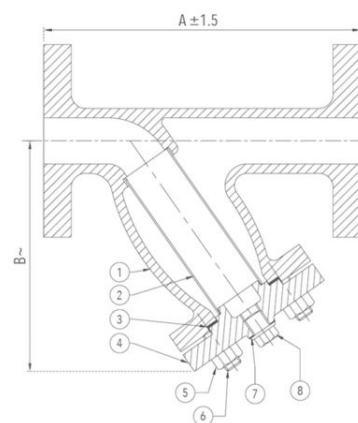
Suitable For

Steam, Water, Oil



Materials

| P.No. | Name of Part | Material of Construction | Specification | Qty. |
|-------|----------------------------|--------------------------|-------------------|---------|
| 1 | Body | Cast Steel | IBR 73 - 80 Gr. B | 1 |
| 2 | Screen (Ø1 mm Perforation) | Stainless Steel | Type 304 | 1 |
| 3 | Gasket | Steam Jointing Sheet | IS 2712 Gr. W/3 | 1 |
| 4 | Bonnet | Cast Steel | IBR 73-80 Gr. B | 1 |
| 5 | Nuts | H.T Steel | ASTM A 194 Gr. 2H | As Reqd |
| 6 | Studs | Alloy Steel | ASTM A 193 Gr. B7 | As Reqd |
| 7 | Gasket | Steam Jointing Sheet | IS 2712 Gr. W/3 | 1 |
| 8 | Plug | Bronze | IS 318 Gr. LTB2 | 1 |



Sizes / Dimensions

| Size (Inches) | Size (mm) | A ±1.5 | B ~ |
|---------------|-----------|--------|-----|
| 1 | 25 | 181 | 135 |
| 1 1/4 | 32 | 222 | 170 |
| 1 1/2 | 40 | 260 | 200 |
| 2 | 50 | 276 | 225 |
| 2 1/2 | 65 | 286 | 250 |
| 3 | 80 | 296 | 280 |
| 4 | 100 | 403 | 312 |
| 6 | 150 | 476 | 364 |

~ ±10

1084 Cast Iron Y-Type Strainer PN 10 (Flanged)

Salient Features

- Flanged Ends to BS 10 Table 'F'.
- Stainless Steel (S.S 304) perforated sheet screen (Ø3 mm Perforation) is guided in body and cover.
- Large screening area makes the strainer efficient in performance.
- Minimum pressure drop inside the body due to streamlined body contours.

Test Pressure (Hydrostatic) :

Shell : 15 kg/cm²g (220 psig)

Maximum Working Pressure : 10 kg/cm²g (150 psig)

Maximum Working Temperature : 220°C

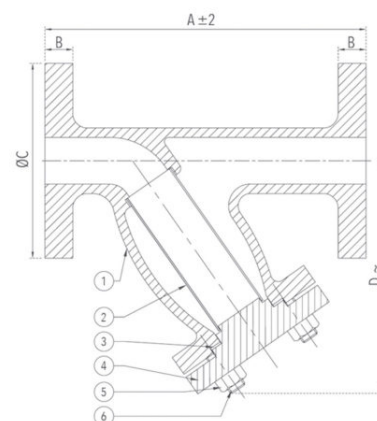
Suitable For

Water



Materials

| P.No. | Name of Part | Material of Construction | Specification | Qty. |
|-------|----------------------------|--------------------------|-------------------|----------|
| 1 | Body | Cast Iron | IS 210 Gr. FG 200 | 1 |
| 2 | Screen (Ø3 mm Perforation) | Stainless Steel | Type 304 | 1 |
| 3 | Gasket | Rubber | IS 638 Type B | 1 |
| 4 | Bonnet | Cast Iron | IS 210 Gr. FG 200 | 1 |
| 5 | Nuts | Carbon Steel | --- | As Reqd. |
| 6 | Studs | Carbon Steel | --- | As Reqd. |



Sizes / Dimensions

| Size (Inches) | Size (mm) | A ±2 | B +3 | ØC +3 | D ~ |
|---------------|-----------|------|------|-------|-----|
| 1 1/2 | 40 | 165 | 16 | 140 | 152 |
| 2 | 50 | 180 | 19 | 165 | 175 |
| 2 1/2 | 65 | 206 | 19 | 184.5 | 180 |
| 3 | 80 | 260 | 19 | 203.2 | 238 |
| 4 | 100 | 295 | 22.2 | 228.6 | 250 |
| 5 | 125 | 385 | 25.4 | 279.4 | 320 |
| 6 | 150 | 385 | 25.4 | 305 | 320 |
| 8 | 200 | 525 | 28.6 | 368.3 | 395 |
| 10 | 250 | 700 | 28.6 | 431.8 | 515 |
| 12 | 300 | 750 | 31.8 | 489 | 570 |
| 14 | 350 | 850 | 35 | 552.5 | 620 |

~ ±10

1084A Cast Iron Y-Type Strainer, PN 16 (Flanged)

Salient Features

- Flanged Ends to BS 10 Table 'F'.
- Stainless Steel (S.S 304) perforated sheet screen (Ø3 mm Perforation) is guided in body and cover.
- Large screening area makes the strainer efficient in performance.
- Minimum pressure drop inside the body due to streamlined body contours.

Test Pressure (Hydrostatic) :

Shell : 24 kg/cm²g (340 psig)

Maximum Working Pressure : 16 kg/cm²g (225 psig)

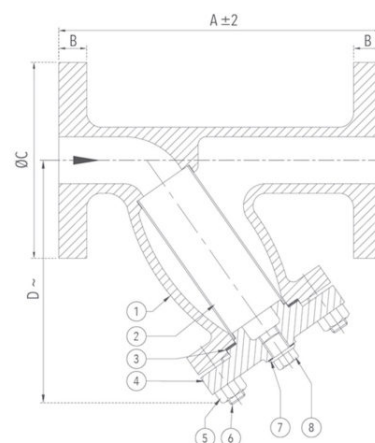
Suitable For

Water



Materials

| P.No. | Name of Part | Material of Construction | Specification | Qty. |
|-------|----------------------------|--------------------------|------------------------------------|----------|
| 1 | Body | Cast Iron | IS 210 Gr. FG 200 | 1 |
| 2 | Screen (Ø3 mm Perforation) | Stainless Steel | Type 304 | 1 |
| 3 | Gasket | Rubber | IS 638 Type B | 1 |
| 4 | Cover | Cast Iron | IS 210 Gr. FG 200 | 1 |
| 5 | Nuts | Carbon Steel | --- | As Reqd. |
| 6 | Studs | Carbon Steel | --- | As Reqd. |
| 7 | Gasket | Rubber | IS 638 Type B | 1 |
| 8 | Drain Plug | Brass / Bronze | IS 6912 Gr. FLB / IS 318 Gr. LTB 2 | 1 |



Sizes / Dimensions

| Size (Inches) | Size (mm) | A ±2 | B +3 | ØC +3 | D ~ |
|---------------|-----------|------|------|-------|-----|
| 1 1/2 | 40 | 165 | 16 | 139.7 | 152 |
| 2 | 50 | 180 | 19 | 165.1 | 169 |
| 2 1/2 | 65 | 206 | 19 | 184.2 | 180 |
| 3 | 80 | 260 | 19 | 203.2 | 242 |
| 4 | 100 | 295 | 22.2 | 228.6 | 267 |
| 5 | 125 | 385 | 25.4 | 279.4 | 320 |
| 6 | 150 | 385 | 25.4 | 304.8 | 331 |
| 8 | 200 | 525 | 28.6 | 368.3 | 434 |
| 10 | 250 | 700 | 28.6 | 431.8 | 533 |

~ ±10