

1047 Bronze Asbestos Packed Water Level Gauge (Screwed) I.B.R

Salient Features

- Screwed Male End to BSP.
- Asbestos Gland Packing.
- Set available for both, Right Hand and Left Hand operations.
- Polished Body.

Test Pressure (Hydrostatic) :

Shell : 21.10 kg/cm²g (300 psig)

Working Pressure (Steam) : 10.55 kg/cm²g (150 psig).

Maximum Working Temperature : 225°C

Suitable For

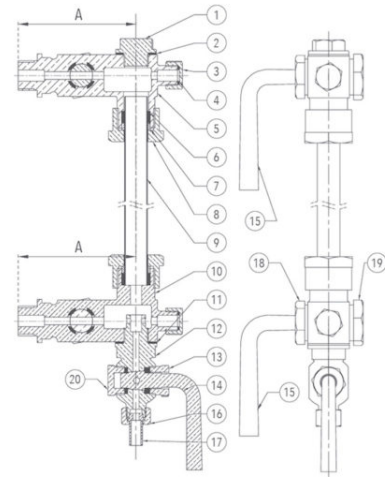
Steam, Water



Materials

| P.No. | Name of Part | Material of Construction | Specification | Quantity |
|-------|---------------|--------------------------|------------------------|----------|
| 1 | Plug | Bronze | IBR 282 (a) (iv) Gr. B | 1 |
| 2 | Gasket | Steam Jointing Sheet | IS 2712 Gr. W/3 | 1 |
| 3 | Lock Nut | Bronze | IBR 282 (a) (iv) Gr. B | 2 |
| 4 | Gasket | Steam Jointing Sheet | IS 2712 Gr. W/3 | 2 |
| 5 | Upper Arm | Bronze | IBR 282 (a) (iv) Gr. B | 1 |
| 6 | Gland Packing | Graphite Asbestos | IS 4687 | - |
| 7 | Gland | Bronze | IBR 282 (a) (iv) Gr. B | 2 |
| 8 | Gland Nut | Bronze | IBR 282 (a) (iv) Gr. B | 2 |
| 9 | Glass Tube* | Toughened Glass | - - - | 1 |
| 10 | Lower Arm | Bronze | IBR 282 (a) (iv) Gr. B | 1 |
| 11 | Gasket | Steam Jointing Sheet | IS 2712 Gr. W/3 | 1 |
| 12 | Drain Valve | Bronze | IBR 282 (a) (iv) Gr. B | 1 |
| 13 | Lock Nut | Bronze | IBR 282 (a) (iv) Gr. B | 1 |
| 14 | Handle | Bronze | IBR 282 (a) (iv) Gr. B | 1 |
| 15 | Handle | Bronze | IBR 282 (a) (iv) Gr. B | 2 |
| 16 | Union Nut | Bronze | IBR 282 (a) (iv) Gr. B | 1 |
| 17 | Tail Pipe | Bronze | IBR 282 (a) (iv) Gr. B | 1 |
| 18 | Lock Nut | Bronze | IBR 282 (a) (iv) Gr. B | 2 |
| 19 | Bottom Nut | Bronze | IBR 282 (a) (iv) Gr. B | 2 |
| 20 | Bottom Nut | Bronze | IBR 282 (a) (iv) Gr. B | 1 |

* Glass Tube is not provided with this product.



Sizes / Dimensions

| Size (Inches) | Size (mm) | A |
|---------------|-----------|-----|
| 1/2 | 15 | 102 |
| 3/4 | 20 | 125 |